

# LD36



## High Power Linear Lensed LED Surface Washer

Data sheet - Page 1

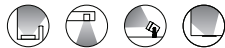
LD36 surface washer offers superb continuous wall washing capabilities, from a very compact product. It offers great flexibility to the designer with a range of options that suit most design details and applications.

### Key Features

- Excellent wall wash capabilities
- Uses the latest in LED technology
- LED spacing is maintained across multiple lengths, so no dark spots!
- High efficiency optics specially designed for LightGraphix guarantee excellent beam spread and shape
- LED spacing of 50, 75 and 100mm are available, allowing cost savings with fewer LEDs and drivers whilst still achieving the desired effect
- 4 fixing options are offered, which include a mini adjustable bracket, ideal for coffers
- IP40 as standard with an IP54 option for wet environments
- Short pieces can be made interlinked to accommodate curves
- More cost effective than using a linked system for an entire project
- Exactly the same product used for both straight and linked sections
- Lengths are custom made, up to 2.1m
- Available with Switched, 0-10V, DMX or Dali drivers

### Specification

#### Applications



#### Beam Angles

12°, 31°, 48°, 36° X 12°

#### LED type

Cree XPG2

#### Colour temperature

2700K\*\* / 3000K | 5000K

Drive Current (mA)	350	500	350	500
LED power per LED* (W)	1.2W	1.7W	1.2W	1.7W
CRI (typical)	93	93	75	75
Forward voltage (V) <sub>100</sub>	3.0V	3.2V	3.0V	3.2V
LED spacing	Delivered lm/m** (L <sub>100</sub> )			
50mm	2065	2818	2509	3423
75mm	1342	1832	1631	2225
100mm	1032	1409	1254	1712
Lumens per circuit watt***	86	83	105	101

LED lifetime (to 70% lumen maintenance) 50,000hrs at a max ambient temperature of 35°C

#### Materials

Silver or black anodised aluminium body, PMMA acrylic lid, ABS end caps

#### Wiring

Comes pre-wired with 2m lead, can be specified with up to 10m at extra cost

#### IP rating

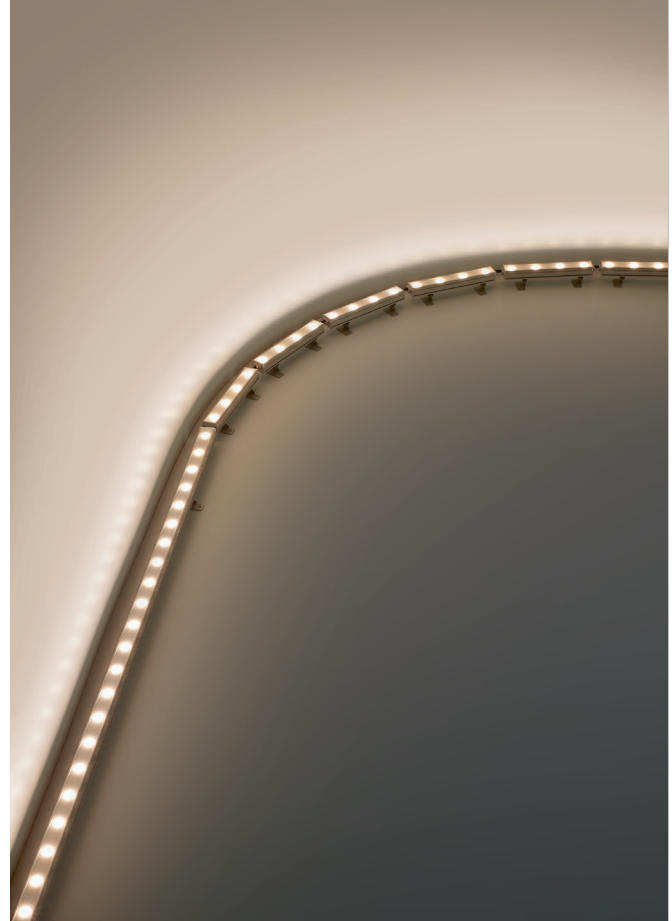
IP40 (IP54 available)

\*LED wattage includes losses associated with using an 85% efficient driver

\*\*2700K lumen output is 12% lower than the 3000K figure listed

4000K lumen output is 14% higher than the 3000K figure listed (80 CRI)

\*\*\*Data shown allows for 50mm spacing



White optic cover with silver extrusion and end caps  
50mm LED spacing



All black colour option  
75mm LED spacing

# LD36

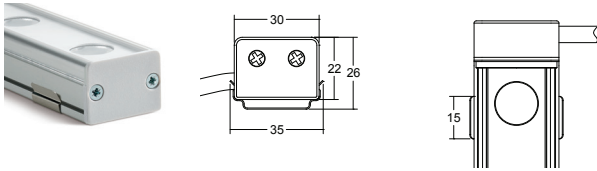


High Power Linear Lensed LED Surface Washer

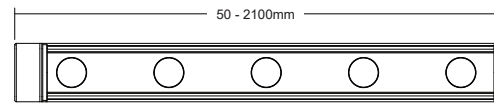
Data sheet - Page 2

## Fixing Options and Dimensions

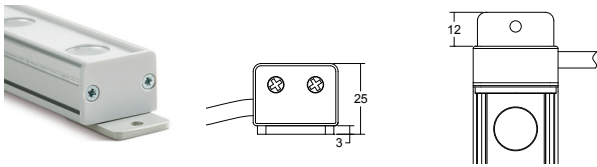
### /SC Spring Clip Fixing



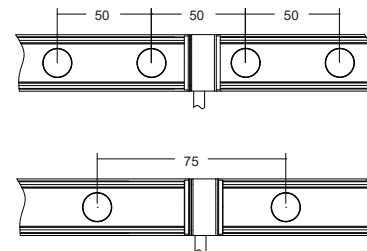
### Custom made lengths



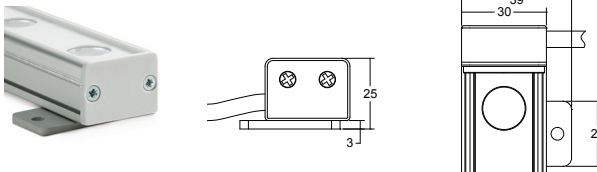
### /BEM Bracket End Mounting (max 1200mm length)



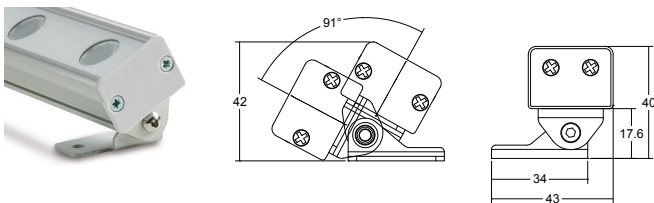
### LED spacing maintained over multiple lengths



### /BSM Bracket Side Mounting



### /ABM Adjustable Bracket Mounting



Cable entry is from the side as standard. With the adjustable brackets it is rear cable entry. (Dimensions in mm)



Project: Harrods Ice Cream Parlour Product: LD36

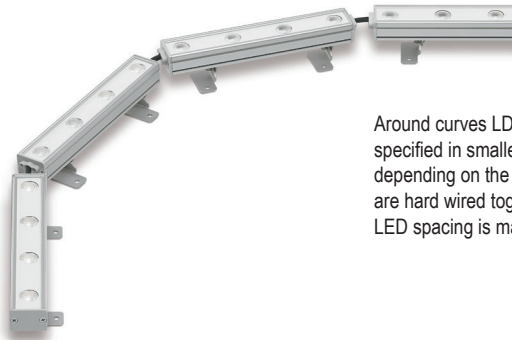
# LD36

High Power Linear Lensed LED Surface Washer

Data sheet - Page 3



## Linked sections

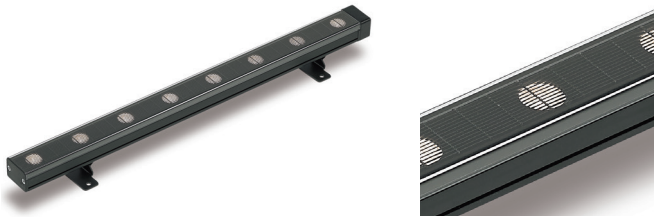


Around curves LD36 can be specified in smaller sections depending on the radius. These are hard wired together so the LED spacing is maintained.

## Accessories

### /GL36

Anti glare louvre. Please note this is always supplied in black finish



## Photometrics

Photometric files are included in the design pack which can be downloaded from the LD36 product page on the website.

## Order Codes and Options

Product code	LED colour	LED spacing	Beam angle	Cover colour	Fixing option	IP rating	Accessory	Length
LD36 - 350 - 500	<input type="checkbox"/>	<input type="checkbox"/>	<input type="checkbox"/>	<input type="checkbox"/>	<input type="checkbox"/>	<input type="checkbox"/>	<input type="checkbox"/>	<input type="checkbox"/>

Example: LD36-500 / LW30 / 50 / OB / White / ABM / IP40 / GL36 / 1200mm

### Product codes with output options

1.2W LED at 350mA	LD36-350
1.7W LED at 500mA	LD36-500

### LED colour options

LED colour options	Suffix
Super Warm White (2200K)	/LW22
Extra Warm White (2700K)	/LW27
Warm White (3000K)	/LW30
White (4000K) - on request	/LW40
Cool White (5000K)	/LW50

\*Other LED colour temperatures are available. Please speak to a member of our sales team.

### LED spacing

50mm	/50
75mm	/75
100mm	/100

### Beam / lens angle options

12° narrow spot	/NB
31° medium	/MB
48° wide	/WB
36° x 12° oval beam	/OB

### Product colour

White or RAL - lens cover only (extrusion is silver anodised)  
Black - end caps, lens cover and extrusion all black

### Fixing options

Spring clips	/SC
Bracket end mounting (max length 1.2m)	/BEM
Bracket side mounting	/BSM
Adjustable bracket mounting	/ABM

### IP rating

IP40 (internal use as standard)	/IP40
IP54 rated for moist environments	/IP54

### Accessory

Linear anti glare louvre (black)	/GL36
----------------------------------	-------

### Use with 350mA and 500mA constant current LED drivers

We have a wide range of dimmable LED drivers, 0-10V, DMX, DALI and Mains dimmable. Please see the downloads section on our website.



Design: Light Bureau Project: Maecon House, London Product: LD36